

# SIMRAN TOOLS INTERNATIONAL

A Trusted Name in Tools Manufacturing  
(Jeweler's & Watchmaker's Tools)



[www.watchtools.in](http://www.watchtools.in)  
[www.jewelerstools.in](http://www.jewelerstools.in)



# INTRODUCTION

Simran Tools International, a trusted name in Tools Manufacturing in India has made tremendous progress as a Manufacturer & Exporter of several kind of Jeweler's Tools & Watchmaker's Tools.

Our innovative range of tools depict our commitment to promote high quality tools after much research and modifications.

Simran Tools International's constant quest for excellence and a will to scale new heights has made it a name to reckon with. The company is today internationally know as one of the leading manufacturers and exporters of tools from India.

## **SIMRAN TOOLS INTERNATIONAL**

664, MILITARY ROAD, ANAND PARBAT,  
NEW DELHI - 110005  
INDIA

**Web Site :** [www.watchtools.in](http://www.watchtools.in)

**Web Sie :** [www.jewelerstools.in](http://www.jewelerstools.in)

**E-mail :** [sales@watchtools.in](mailto:sales@watchtools.in)

**E-mail :** [simrantools@vsnl.net](mailto:simrantools@vsnl.net)

**Mobile :** +91-9958281414

**Mobile :** +91-9313811414



# COMPANY PROFILE

**Simran Tools International** came into existence in the year 1992. Since its inception the Company has been in the business of manufacturing and exporting various kinds of Jeweler's Tools & Watchmaker's Tools.

We are a highly professional company managed by experienced people from the tools industry in India. The success story of the company lies in the hard work and dedication of the entire team of skilled professionals and the support of customers all around the world.

Our Specialty to develop new products (with our R&D Department backed by Team of Professional Engineers) differentiates us from other manufacturers. We are also capable to Design and Develop the products as per customer's specifications.

Our products are inspected at every stage of production to maintain the best quality consistently. We understand the importance of quality and believe in it as our best salesman.

**The Motto of the Company is to deliver the best products and services to the customers at most competitive prices. We ensure Quick, Prompt and Timely Delivery.**

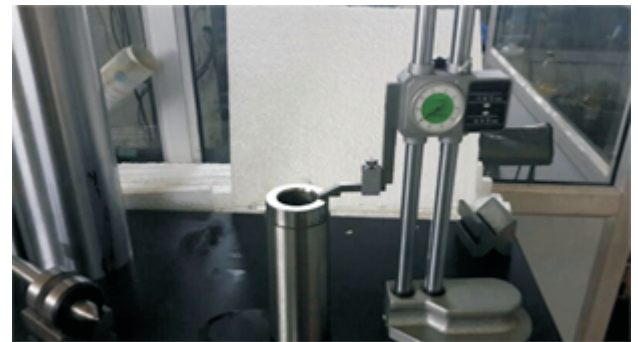
**We also provide with the facility of packing our products in the customer's brand name.**

# INFRASTRUCTURE



The main aim of the company is to develop new and innovative quality products with the help of advanced technology to meet the varied demands of the customers worldwide. **Our R&D Department** is fully capable to foresee the future needs of the International Market, which helps us to carry on with various researches in design, and technology that gives us an edge in this competitive market.

The company has a **state-of-the-art production** unit equipped with CNC machines, Grinders, Lathe machines, Shapers, Milling machines, Power Presses and various other machines. We strictly follow the instructions of our valued buyers. We never compromise with quality and follow International Standards with the help of various Inspection Instruments like Profile Projector, Master Gauges, Cylindrical Bore Gauges, Ring Gauges, Tensile Tester, Torch Tester, Surface Tester, Izod Impact Tester, 3D Coordinate Measuring Machines, etc.



# INDEX

## PIN VICES & PIN CHUCK SETS

Hand Drill Pin Vice (Push Drill).....	10
Hand Drill & Pin Vice with Swivel Head.....	10
Mini Brass Drill Pin Vice.....	10
Brass Pin Vice.....	10
Double Collet Pin Vice.....	10
Double Collet Pin Vice - American Type.....	10
Square Chuck Pin Vice.....	10
Graver Pin Vice with Handle.....	10
Pin Vice Sliding.....	10
Pin Vice (Single Ended).....	11
Hand Vice with Wing Nut.....	11
Small Hand Vice (Hollow Wire Vice).....	11
Pin Chuck Sets.....	11
Adapter Pin Chuck Sets.....	11
Pick up Tools.....	11

## BOXES, BEAD BOARDS, RACKS & TRAYS

Aluminum Boxes - Plain.....	12
Aluminum Boxes - Coloured.....	12
Aluminum Boxes - In Wooden Box.....	12
Plastic Boxes - with Round Boxes.....	12
Plastic Boxes - with 8 Compartments.....	13
Plastic Boxes - with 18 Compartments.....	13
Plastic Boxes - with 24 Compartments.....	13
Burr Boxes.....	13
Handy Block.....	13
Beading String Boards.....	13
Plastic Bead Board - 13" x 9-1/2".....	13
Plastic Bead Board - 13" x 8-3/4".....	13
Plastic Bead Board - Multistrand Design.....	13
Plastic Bead Board - Larger Single Strand.....	13
Plier Rack.....	13
Plier Rack Stand.....	13
Plier Stand.....	13
Ultra Sonic Tank Rack.....	14
Cleaning Racks.....	14
Sorting Trays for Beads.....	14
Sorting Trays - Plastic Hollow.....	14
Shovels.....	14
Diamond Shovels.....	14
Filling Shovel - Small.....	14
Filling Shovel - Big.....	14

## BRUSHES & BUFFS

Brush with Sable Hair.....	15
Brush for Multipurpose Cleaning.....	15
Brush for General Cleaning.....	15
Brush Nylon - 4 Rows.....	15
Brush Nylon - 6 Rows.....	15
Brush Nylon - Bristle.....	15
Brushes Circular Black.....	15
Brushes Circular Brass.....	15
Yellow Cotton Brush.....	15
Soft Felt Brush.....	15
Unbleached Calico Buffs.....	15
Yellow Muslin Buffs.....	15

## HAMMERS, MALLETS & PUNCHES

Chaser Hammers.....	16
Swiss Style Hammers.....	16
Six in One Hammers.....	16
Ball Pein Hammers.....	16
Planishing Hammers.....	16
Forming Hammers.....	16
Hammer - Nylon Head.....	16
Hammer - Nylon.....	16
Wooden Mallet.....	16
Wooden Mallet.....	16
Wooden Mallet - Pearl Shape.....	16
Raw Hide Mallet.....	16
Automatic Center Punches.....	17
Punch Set / Watch Staking Tools.....	17
Punch Set of 16 & Riveting Stand.....	17
Carat Punch.....	17
Hole Closing Punches.....	17
Pearl Punch Boxes.....	17

## SAW FRAMES & VICES

Fixed Saw Frames - Standard.....	18
Fixed Saw Frames - Size 5-1/2".....	18
Fixed Saw Frames - Size 8".....	18
Fixed Saw Frames - Size 11-1/2".....	18
Fixed Saw Frames - Superior.....	18
Adjustable Saw Frames - Economy.....	18
Adjustable Saw Frames - Deluxe.....	18
Adjustable Saw Frames - Deluxe.....	18
Adjustable Saw Frames - Germany Type.....	18
Adjustable Saw Frames - Germany Type (with Tension Screw).....	18
Vice Fixed Base.....	19
Vice Revolving without Clamp.....	19
Table Vice with Clamp.....	19
Table Vice Clamp Type - Revolving.....	19
Hand Vice with Wing Nut.....	19
Small Hand Vice (Hollow Wire Vice).....	19
Ring Vice with Bench Pin.....	19



# INDEX

## EYE GLASS & MAGNIFIERS

Double Lens Eye Glass.....	20
Plastic Eye Glass.....	20
Aluminum Eye Glass.....	20
Eye Glass.....	20
Eye Glass Tripod - 18mm.....	20
Eye Glass Tripod - 21mm.....	20
Eye Glass Tripod - Black Head.....	20
Eye Glass Tripod - Round Shape Head.....	20
Eye Glass Tripod - Plastic (10X).....	20
Spectacle Eye Glass with Clip.....	20
Eye Magnifiers - Brass Textile Eye Glass.....	21
Eye Magnifiers - German Eye Glass.....	21
Eye Magnifiers with Stand.....	21
Eye Magnifiers - Reflex Eye Glass.....	21
Eye Magnifier with Bakelite Handle.....	21
Eye Magnifier with Handle - All Plastic.....	21
Eye Magnifier (3.5x) - Binocular Type.....	21
Magnifier with Key Chain.....	21
Folding Magnifiers - Plastic Cover (Triple Lens).....	21
Folding Magnifiers - Plastic Cover (Double Lens).....	21
Folding Magnifiers - Plastic Cover (Single Len).....	21
Folding Magnifiers - Leather Cover.....	22
Folding Magnifiers - Pocket.....	22
Collapsible Eye Loupes.....	22
Eye Loupes - Oval.....	22
Eye Loupes - Hex.....	22
Eye Loupes - Round (with Stylish Colors).....	22
Eye Loupes - Hex (with Stylish Colors).....	22

## SCREW DRIVES & TWEEZERS

Screw Drivers - Set of 5 Pcs. (Light).....	23
Screw Drivers - Set of 5 Pcs. (Heavy).....	23
Screw Drivers - Set of 10 Pcs. ....	23
Screw Drivers - Philip (Light).....	23
Screw Drivers - Philip (Heavy).....	23
Screw Drivers - Philip & Flat (Combined).....	23
Screw Drivers - Reversible (Set of 6 Pcs.).....	23
Screw Drivers -Reversible (Set of 7 Pcs.).....	23
Screw Drivers with Spare Blades (Set of 7 Pcs.).....	24
Screw Drivers with Spare Blades (Set of 9 Pcs.).....	24
Screw Drivers with Wooden Box (Set of 6 Pcs.).....	24
Screw Drivers with Wooden Box (Set of 9 Pcs.).....	24
Screw Drivers with Revolving Stand (Light).....	24
Screw Drivers with Revolving Stand (Heavy).....	24
Screw Drivers with Fixed Stand.....	24
Screw Drivers Stand - Revolving (Light).....	24
Screw Drivers Stand - Revolving (Heavy).....	24
Screw Drivers Sharpener.....	24
Tweezers for Cell Testing.....	25
Tweezers - Plastic.....	25
Tweezers - Brass.....	25
Tweezers - Steel.....	25
Tweezers - Diamond (Coloured).....	25
Antimagnetic Tweezers.....	25

## JEWELER'S & WATCHMAKER'S PLIERS

Plier Long Chain Nose.....	26
Plier Long Nose with Comfort Grip.....	26
Plier Chain Nose.....	26
Plier Chain Nose with Spring.....	26
Plier Chain Nose with Comfort Grip.....	26
Plier Round Nose with V Spring.....	26
Plier Round Nose with Spring.....	26
Plier Round Nose with Comfort Grip.....	26
Plier Bent Nose with V Spring.....	26
Plier Bent Nose Spring.....	26
Plier Flat Nose with V Spring.....	26
Plier Flat Nose with Spring.....	26
Plier Flat Nose with Comfort Grip.....	26
Plier Flat Nose - with Nylon Jaw.....	26
Plier Flat Nose with Brass Tip.....	26
Plier Long Flat Nose.....	27
Plier Side Cutter with V Spring.....	27
Plier Side Cutter with Spring.....	27
Plier Side Cutter with Comfort.....	27
Plier Top Cutter with V Spring.....	27
Plier Top Cutter with Spring.....	27
Plier Top Cutter with Comfort Grip.....	27
Plier Extra Long - Chain Nose.....	27
Plier Extra Long - Round Nose.....	27
Plier Extra Long - Flat Nose.....	27
Plier Extra Long - Bent Nose.....	27
Plier Extra Long - Side Cutter.....	27
Plier Extra Long - Set of 5.....	27
Plier Rosary - Chain Nose.....	27
Plier Rosary - Round Nose.....	27
Plier Chain Link Remover - Round Nose Type.....	28
Plier Chain Link Remover - Flat / Round Nose Type.....	28
Plier Chain Link Remover for Watch Bands.....	28
Plier Type Chain Link Remover.....	28
Miniature Plier - Set of 6 Pcs.....	29
Miniature Plier - Set of 4 Pcs. in Canvas Wallet.....	29
Miniature Plier - Set of 4 Pcs. in Nylon Wallet.....	29
Miniature Plier - Set of 4 Pcs. in Pouch.....	29
Plier Ring Holding.....	28
Plier Ring Bending - Flat / Half Round Nose.....	28
Plier Ring Bending.....	28
Plier Wire Wrapping.....	28
Plier Wire Bending.....	28
Plier - Hemostat (Stainless Steel).....	28
Plier - Hemostat with Insulated Handle.....	28
Plier Combination.....	29
Plier Forming.....	29
Plier Loop Closing.....	29
Plier Looping.....	29
Plier Stone Setting.....	29
Bead Crimping Plier.....	30
Plier Spectacles.....	30
Plier Punching.....	30
Plier Knotching.....	30
Plier Bow Opening.....	30
Plier Shear.....	30
Jewelers Snips.....	30

# INDEX

## WATCH - OPENERS, REMOVERS & HOLDERS

Jaxa Case Opener.....	31
Jaxa Case Opener with Wooden Box.....	31
Case Opener - Pocket.....	31
Case Opener - Butterfly.....	31
Case Opener - Suction Type.....	31
Case Opener for Quartz.....	31
Case Opener - Knife.....	31
V - Shape Opener.....	31
Rolex Opener.....	31
Chain Link Removers - Brass.....	31
Chain Link Removers - Aluminum.....	31
Chain Link Removers - Superior Quality.....	31
Plier Chain Link Removers - Round Nose Type.....	28
Plier Chain Link Removers - Flat / Round Nose Type.....	28
Plier Chain Link Removers for Watch Bands.....	28
Plier Type Chain Link Removers.....	28
Link Remover without Wooden Stand.....	31
Link Remover with Wooden Stand.....	31
Link Remover (Set of 3) Pins.....	31
Spring Bar Removers with MM.....	32
Spring Bar Removers - Brass Body.....	32
Spring Bar Removers - Aluminum Body.....	32
Spring Bar Removers - Simple.....	32
Spring Bar Removers - Nickelled.....	32
Spring Bar Remover with Rubber.....	32
Spring Bar Tools - European Style.....	32
Spring Bar Tools - Nickelled.....	32
Spring Bar & Pull out Pusher.....	32
Glass Remover with Plate (Plastic Handle).....	32
Glass Remover with Plate (Alumium Handle).....	32
Hand Removers - Presto.....	32
Hand Removers - Plunger.....	32
Hand Remover Steel - Set of 2 Pcs.....	32
Hand Presser for Fitting Hands.....	32
Hand Presser Reversible.....	33
Simple Hand Presser.....	33
Hand Presser (Set of 9).....	33
Hand Presser with Center Spring.....	33
Plastic Blocks.....	33
Wooden Blocks.....	33
Watch Case Holders - with 4 Pins.....	33
Watch Case Holders - Movement Type.....	33
Watch Case Holders - Burgen Type.....	33
Wooden Case Holders.....	33
Case Holders with Clamp.....	33
Moverment Holders - Quartz.....	34
Movement Holders - Plastic (Block).....	34
Moverment Holders - Plastic (Set of 12 Pcs.).....	34
Movement Holders - Swiss Type.....	34
Movement Holders - Multipurpose.....	34
Movement Holders - Multipurpose (Brass Nickelled).....	34
Universal Work Holders.....	34

## WATCH - EQUIPMENTS & MACHINES

Glass Fitting Machine with 6 Nylon Dies.....	35
Glass Fitting Machine with 12 Nylon Dies.....	35
Glass Fitting Machine with 12 Nylon Dies & 4 Square Dies.....	35
Glass Fitting Machine - Round Base with 14 Nylon Dies.....	35
Glass Fitting Machine - with 28 Aluminum Dies.....	35
New Simran Glass Fitting Machine.....	35
Apollo Glass Fitting Machine.....	35
Master Jig Glass Fitting Machine.....	35
Rolex Galss Fitting Machine.....	35
Multipurpose Press.....	35
Hand Presser - Set of 9.....	33
Hand Presser with Centre Spring Action.....	33
Demagnetising Appliance.....	36
Electronic Line Freeing Machine.....	36
Watch Cleaning Machines.....	36
Watch Polishing Machines - Single Disk.....	36
Watch Polishing Machines - Double Disk.....	36
Watch Glass Edging & Polishing Machine.....	36
Auto Winder.....	36
Appratus for Testing Water Resistance of Watch.....	36
Buffing & Grinding Machine.....	36

## WATCHMAKER'S TOOLS MISC.

Dust Blower with Long Nozzle.....	37
Dust Blower with Brass Nozzle.....	37
Dust Blower Small with Long Nozzle.....	37
Watch Battery Changing Kit with Pouch.....	37
Watch Battery Changing Kit with Leather Case (8 Pcs.).....	37
Watch Battery Changing Kit with Leather Case (9 Pcs.).....	37
Set of 4 Watch Case Openers.....	37
Set of 2 Watch Case Openers.....	37
Watchmakers Tool Set - 4 Pcs.....	38
Oil Cups - 3 Holdes.....	38
Benzene Cup.....	38
Watch Oil.....	38
Clock Oil.....	38
Riveting Hole Plate - Round.....	38
Riveting Hole Plate - Rectangle.....	38
Riveting Hole Plate - Hexagonal.....	38
Dust Covers.....	38
Dial Cleaning Brush.....	38
Grease Lubricating.....	38
Silicon Grease.....	38
O Rings.....	38

# INDEX

## JEWELER'S - BENCH TOOLS / ACCESSORIES

Bench Pins - Wooden	39
Wooden Bench Pin	39
Bench Pin in Metal Holder	39
V - Slot Bench Pin	39
Bench Pin - Spring Load	39
Bench Pin with Combination Anvil	39
Burnishers - Straight	39
Burnishers - Curved	39
Bezel Roller	39
Bezel Pusher	39
Prong Pusher	39
Prong Lifter	39
Bench Filling Block	39
Bracelet Setting Wheel	39
Hand Operated Ring Expander	39
Chain Cutter	40
Machinist Square	40
Tap Holders	40
Automatic Centre Punch	40
Burr Boxes	40
Wooden Handy Block	40

## JEWELER'S - CASTING & SOLDERING EQUIPMENTS

Third Hand Base	41
Third Hand Base	41
Magnetic Hand Base	41
Glass Alcohol Lamp	41
Glass Alcohol Lamp	41
Ingot Mould	41
Ingot Mould - High Quality	41
Reversible Ingot Mould	41
Adjustable Ingot Mould	41
Ingot Mould - Open	41
Rubber Mixing Bowls	41
Rubber Sprue Bases	41

## JEWELER'S - DAPPING TOOLS

Dapping Die & Design Block	48
Dapping Die & Design Block with 4 Circular Holes	48
Flat Dapping Block	48
Doming Block - Steel	48
Doming Block - Brass	48
Doming Block - Bronze	48
Doming Block - Wooden	48
Doming Punch - Steel	48
Dapping Punch - Steel	49
High Quality Dapping Punch	49
Dapping Punch Sets	49
Wooden Dapping Punch	49
Wooden Stand for Dapping Punch	49
Disc Cutter	49

## JEWELER'S - GAUGES, STICKS & CLAMPS

Bracelet Size Gauges	42
Bangle Gauge - Brass	42
Bangle Gauge - SS	42
Pearl & Diamond Gauge	42
Steel Rules	42
Gauge - Vernier (Brass)	42
Gauge - Vernier (Metal)	42
Gauge Finger Sizes / Ring Sizer	42
Gauge Finger Sizes / Ring Sizer (Half Round)	42
Gauge Finger Sizes / Ring Sizer (Removable)	42
Gauge Finger Sizes / Ring Sizer (Metal)	43
Gauge Finger Sizes / Ring Sizer (Wedding Ring Style)	43
Gauge Ring Metal Sizes (Universal)	43
Gauge Finger Sizes / Ring Sizer (Plastic)	43
Gauge Finger Sizes / Ring Sizer (Plastic)	43
Gauge Finger Sizes / Ring Sizer (Plastic)	43
Bangle Sizer - Plastic	43
Bangle Sizer - Brass	43
Ring Sticks - Aluminum	44
Ring Sticks	44
Ring Sticks	44
Ring Sticks - Universal	44
Ring Sticks - with Plastic Handle	44
Ring Sticks - Plastic	44
Ring Sticks - Plastic	44
Ring Sticks - with Wooden Handle	44
Large Ring Mandrel	44
Wooden Mandrel	44
Ring Clamp - Fly Nut	45
Ring Clamps - Wooden	45
Ring Clamp - Plastic	45
Ring Clamp - European Style	45
Black Ring Clamp - with Nylon Jaws	45
Ring Clamp Plastic with Bench Pin	45
Wood Ring Vices	45
Wood Ring Vice with Brass Nut	45

## JEWELER'S - EQUIPMENTS & MACHINES

Ring Expanding Machine	46
Ring Expanding Machine with 12 Collets	46
Ring Expander cum Bender	46
Hand Operated Ring Expander	46
Ring & Bangle Rounding Machine	46
Double Head Ring Stretcher / Expander	46
Ring Stretcher with 17 Dies	46
Stepped Ring Stretcher	46
Simple Ring Stamping Machine	46
Bangle Flattening Machine	47
Bangle Expanding Machine	47
Bangle Sizing Machine	47
Rolling Mills	47
Reduction Rolling Mill with Gear Reduction ( 4 inches)	47
Reduction Rolling Mill with Gear Reduction (5 inches)	47
Stamping Machine	47
Zig Zag Machine	47
Hand Drill Machines	47
Bracelet Setting Wheels	47



**JEWELER'S TOOLS MISC.**

Anvils .....	<b>50</b>
Anvil - Heavy Duty .....	<b>50</b>
Horn Flat Anvil .....	<b>50</b>
Buff Rake with Wooden Handle .....	<b>50</b>
Buff Rake Small with Wooden Handle .....	<b>50</b>
Buff Rake – Steel .....	<b>50</b>
Plastic Ear Gun .....	<b>50</b>
Ring Holder .....	<b>50</b>
Draw Plates .....	<b>50</b>
Steel Blocks .....	<b>50</b>
Burnisher - Straight .....	<b>51</b>
Burnisher - Curved .....	<b>51</b>
Bezel Roller .....	<b>51</b>
Bezel Pusher .....	<b>51</b>
Prong Pusher .....	<b>51</b>
Prong Lifter .....	<b>51</b>
Disc Cutter .....	<b>51</b>
Scratch Brush .....	<b>51</b>

**DIAMOND TOOLS**

Diamond Grip - Coloured .....	<b>52</b>
Diamond Grip – Coloured (Small) .....	<b>52</b>
Diamond Tweezers – Coloured .....	<b>52</b>
Diamond Sieves .....	<b>52</b>
Lazor Diamond Sieves .....	<b>52</b>
Pearl Sieves .....	<b>52</b>
Shovels .....	<b>53</b>
Diamond Shovels .....	<b>53</b>
Filling Shovel - Small .....	<b>52</b>
Filling Shovel – Big .....	<b>52</b>
Oval Gauge .....	<b>53</b>
Diamond Fan Gauge .....	<b>53</b>
Diamond / Gem Stone Fan Gauge .....	<b>53</b>
Diamond Gauge .....	<b>53</b>
Gauge Metal for Diamonds .....	<b>53</b>
Metal Pocket Gauge .....	<b>53</b>
Pearl & Diamond Gauges .....	<b>53</b>
Pearl Gauges .....	<b>53</b>
Gauge for Weighing Diamonds .....	<b>53</b>
Eye Glass Tripod - 18mm .....	<b>54</b>
Eye Glass Tripod - 21mm .....	<b>54</b>
Eye Glass Tripod - Black Head .....	<b>54</b>
Eye Glass Tripod - Round Shape Head .....	<b>54</b>
Eye Magnifiers with Stand .....	<b>54</b>
Folding Magnifier Pocket .....	<b>54</b>
Eye Loupes - Oval .....	<b>55</b>
Eye Loupes - Hex .....	<b>55</b>
Eye Loupes - Round (with Stylish Colors) .....	<b>55</b>
Eye Loupes - Hex (with Stylish Colors) .....	<b>55</b>

### Hand Drill Pin Vice (Push Drill)



- For close drilling of Small Works.
- At bench provided with one extra chuck.
- It is 180 mm long with 3 times rotation in a stroke.

**ITEM NO. : PIN-120**

### Hand Drill Pin Vice with Swivel Head (Master Pin Vice)



- Has 2 Double-End Collets with a capacity 0 to 3.2mm.
- Screw Chuck Tightly Holds Miniature Tools and Jobs.
- Has swivel Head. Bright Nickel Plate finish.

**ITEM NO. : PIN-160**

### Mini Brass Drill Pin Vice



- Ideal for holding small Drills, Pins etc.
- Capacity 0 to 0.7 mm.

**ITEM NO. : PIN-140**

### Double Collet Pin Vice



- Ideal Tool for Holding Small Jobs
- Has Two Collets with Knurled Body
- Capacity 0 to .150"
- Overall Length 4"

**ITEM NO. : PIN-180**

### Double Collet Pin Vice (American Type)



- All Brass Body.
- Ideal Tool for Holding Small Jobs.
- Accurate Collets

ITEM NO.	DESCRIPTION
PIN-260	Light
PIN-262	Heavy

### Brass Drill Pin Vice



- Made of Brass.
- Ideal for Holding Small Tools, Rods, Wires etc.
- Capacity 0 to .028".
- Overall Length 4".

**ITEM NO. : PIN-240**

### Square Chuck Pin Vice



- Ideal for Holding Small Jobs.
- Holding Capacity 0 to 150" / 0 to 3.8 mm.
- Overall Length 4".
- Reversible with two size capacities at each end.

**ITEM NO. : PIN-200**

### Graver Pin Vice with Handle



- Available in Wooden & Plastic Handle.

ITEM NO.	HANDLE
PIN-340	Wooden
PIN-350	Plastic

### Sliding Pin Vice



- Ideal Tool to grip small jobs.
- Holding Capacity 0 to 1.3 mm.
- Overall Length 100mm.

**ITEM NO. : PIN-380**

### Pin Vice - Single Ended



- Ideal Vice for holding Small Tools, Wires, Taps etc.
- Collets grip firmly when screw chuck is tightened.
- Heavy Knurled Body.
- Black Shiny finish.
- Available in individual sizes and also in a set of four in attractive pouch.

ITEM NO.	CAPACITY
PIN-410	0 to 1.0 mm
PIN-415	0.8 to 1.5 mm
PIN-420	1.3 to 3.1 mm
PIN-425	3.0 to 4.8 mm
PIN-430	Set of 4 in an attractive Plastic Pouch

### Hand Vice with Wing Nut



- Malleable Iron Jaws have Serrations.
- Wing Nut Adjustment.
- Very useful for Model Makers etc.
- Overall Length 6-1/2", Jaw Opening 5/8".

**ITEM NO. : PIN-100**

### Small Hand Vice (Hollow Wire Vice)



- Small Hand Vice is very useful for Jewellers for Holding Small Wire.
- Wing Nut Adjustment.
- Knurled Body for easy grip.

**ITEM NO. : PIN-300**

### Pin Chuck Set



- Designed for Holding Small Drills.
- Three interchangeable collets available.
- Black Shiny finish.
- One Pin Chuck with all three Collets: 0 to 1/32", 1/32" to 1/16", 1/16" to 3/32".

**ITEM NO. : PIN-450**

### Adapter Pin Chuck Set



**ITEM NO. : PIN-480**

- For use with Miniature Drills.
- Lock this adapter in chuck to convert it for precise drilling.
- Also adapts 3/32" collets on rotary tools and flexible shafts to a more useful 0 to 3/32".
- Comes with two set of jaws (capacity 0 to 1/16" and 1/16" to 3/32").
- Shank Dia. 3/32", Shank Length 1-3/8".
- Overall Length 2-5/8".

### Pick up Tools



ITEM NO.	DESCRIPTION	PRONGS
PIN-510	Mini Pick up Tool	Three
PIN-515	Standard Pick up Tool	Three
PIN-520	Standard Pick up Tool	Four

- Ideal Tool for picking and holding small items.
- Chrome Plated Knurled Body.
- Very Handy Tool for Machinists, Assemblers, Mechanics and Jewellers



### Aluminum Boxes - Plain



ITEM NO.	DESCRIPTION (DIA OF ROUND BOXES)	QUANTITY (IN ONE RECTANGULAR BOX)
BRT-099	18 mm x 21 mm	20 Pcs.
BRT-100	18 mm x 21 mm	25 Pcs.
BRT-101	18 mm x 21 mm	36 Pcs.
BRT-102	18 mm x 21 mm	54 Pcs.
BRT-104	18 mm x 21 mm	108 Pcs.
BRT-106	22 mm x 18 mm	40 Pcs.
BRT-107A	25 mm x 19 mm	12 Pcs.
BRT-107B	25 mm x 19 mm	15 Pcs.
BRT-107C	25 mm x 19 mm	20 Pcs.
BRT-108	25 mm x 19 mm	40 Pcs.
BRT-109A	26 mm x 19 mm	12 Pcs.
BRT-109B	26 mm x 19 mm	16 Pcs.
BRT-110	26 mm x 19 mm	24 Pcs.
BRT-111A	26 mm x 19 mm	28 Pcs.
BRT-111B	26 mm x 19 mm	30 Pcs.
BRT-111C	26 mm x 19 mm	35 Pcs.
BRT-112	26 mm x 19 mm	48 Pcs.

ITEM NO.	DESCRIPTION (DIA OF ROUND BOXES)	QUANTITY (IN ONE RECTANGULAR BOX)
BRT-114	33 mm x 14 mm	06 Pcs.
BRT-115	33 mm x 14 mm	09 Pcs.
BRT-116	33 mm x 14 mm	10 Pcs.
BRT-117A	33 mm x 16 mm	06 Pcs.
BRT-117B	33 mm x 16 mm	09 Pcs.
BRT-117C	33 mm x 16 mm	10 Pcs.
BRT-118	33 mm x 16 mm	12 Pcs.
BRT-120	33 mm x 19 mm	20 Pcs.
BRT-121	33 mm x 19 mm	24 Pcs.
BRT-122	36 mm x 19 mm	15 Pcs.
BRT-124	41 mm x 20 mm	06 Pcs.
BRT-126	41 mm x 20 mm	12 Pcs.
BRT-127	47 mm x 24 mm	04 Pcs.
BRT-128A	53 mm x 24 mm	04 Pcs.
BRT-128B	53 mm x 24 mm	06 Pcs.
BRT-130	53 mm x 24 mm	12 Pcs.
BRT-132	75 mm x 27 mm	06 Pcs.

### Aluminum Boxes - Coloured



ITEM NO.	DESCRIPTION (DIA OF ROUND BOXES)	QUANTITY (IN ONE RECTANGULAR BOX)
BRT-165	33 mm	20 Pcs.
BRT-170	36 mm	15 Pcs.
BRT-175	53 mm	12 Pcs.

### Aluminum Boxes - In Wooden Box



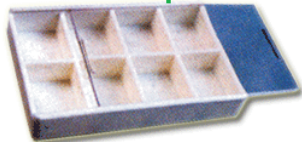
ITEM NO.	DESCRIPTION
BRT-200	With 36 Aluminum Boxes of 22 x 18 mm
BRT-205	With 24 Aluminum Boxes of 22 x 18 mm
BRT-210	With 18 Aluminum Boxes of 46 x 24 mm

### Plastic Boxes - with Round Plastic Boxes



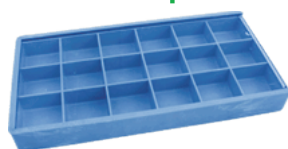
ITEM NO.	SIZE OF ROUND BOXES	QTY. IN ONE RECTANGULAR BOX
BRT-230	30 x 18 mm	20 Pcs.
BRT-240	40 x 12 mm	12 Pcs.

### Plastic Box with 8 Compartments



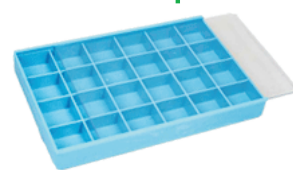
ITEM NO. : BRT-265

### Plastic Box with 18 Compartments



ITEM NO. : BRT-270

### Plastic Box with 24 Compartments



ITEM NO. : BRT-275

### Burr Boxes



ITEM NO.	DESCRIPTION
BRT-360	36 HOLES
BRT-362	72 HOLES
BRT-364	100 HOLES
BRT-366	200 HOLES

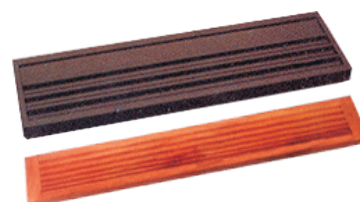
### Handy Block



- Wooden Handy Block with 88 Holes

ITEM NO. : BRT-390

### Beading String Board



- Size 13-1/4" x 3-1/2" x 1/2"
- Size 22" x 4" x 1/2"

ITEM NO.	DESCRIPTION
BRT-504	In Black Wooden
BRT-506	In Natural Polish

### Plastic Bead Board



- Covered in Gray Colour Flocking
- 13" x 9-1/2"

ITEM NO. : BRT-530

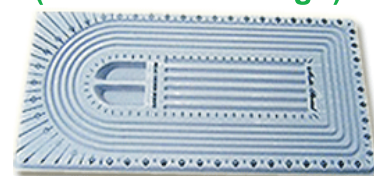
### Plastic Bead Board



- Covered in Gray Colour Flocking
- 13" x 8-3/4"

ITEM NO. : BRT-535

### Plastic Bead Board (Multistrand Design)



- Plastic Multistrand Design Board
- Covered in Gray Colour Flocking
- 21" x 10-1/2"

ITEM NO. : BRT-540

### Plastic Bead Board (Larger Single Strand)



- Plastic Larger Single Strand Board
- Covered in Gray Colour Flocking
- 21" x 8"

ITEM NO. : BRT-545

### Plier Rack



ITEM NO.	DESCRIPTION
BRT-610	With Drawer
BRT-612	Without Drawer

### Plier Rack Stand



ITEM NO. : BRT-625



### Plier Stand

ITEM NO.	DESCRIPTION
BRT-635	10 HOLES
BRT-640	12 HOLES

### Ultrasonic Tank Rack



ITEM NO.	DESCRIPTION
BRT-692	16 Peg Standing
BRT-694	32 Peg Standing
BRT-696	64 Peg Standing

### Cleaning Rack



ITEM NO.	DESCRIPTION
BRT-710	With 8 Hook St.
BRT-715	With 12 Hook St.
BRT-720	With 8 Replaceable Hook
BRT-725	With 12 Replaceable Hook

### Sorting Trays for Beads



ITEM NO.	SIZE	COLOUR
BRT-812	4" X 2-1/2"	White
BRT-814	4" X 2-1/2"	Black
BRT-816	7" X 4"	White
BRT-818	7" X 4"	Black

### Sorting Trays Plastic Hollow - Rectangular



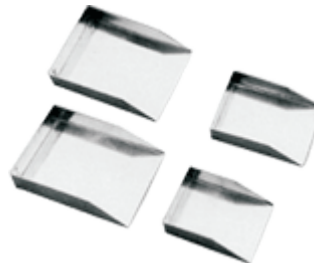
ITEM NO.	SIZE	COLOUR
BRT-824	4" X 2-1/2"	White
BRT-826	4" X 2-1/2"	Black

### Shovels



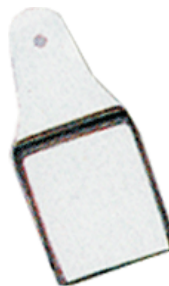
ITEM NO.	DESCRIPTION
BRT-920	Chrome
BRT-922	Black

### Diamond Shovel



ITEM NO.	DESCRIPTION
BRT-940	1 No.
BRT-942	2 No.
BRT-946	3 No.
BRT-948	4 No.
BRT-950	5 No.

### Filling Shovel - Small



- Filling Shovel Chrome
- Size 30 x 70 mm

**ITEM NO. : BRT-970**

### Filling Shovel - Big



- Filling Shovel Chrome
- Size 65 x 100 mm

**ITEM NO. : BRT-975**



### Brush with Sable Hair



ITEM NO. : BRS-050

### Brush for Multipurpose Cleaning



ITEM NO. : BRS-055

### Brush Nylon Bristle



- with Wooden Handle

ITEM NO. : BRS-088

### Brush for General Cleaning Brush



ITEM NO. : BRS-060

### Brush Nylon - 4 Rows



ITEM NO. : BRS-072

### Brush Nylon for Clock - 6 Rows



ITEM NO. : BRS-075

### Brushes Circular Black



ITEM NO.	DESCRIPTION
BRS-152	Brush With Circular Black Bristles, 3 Rows
BRS-155	Brush With Circular Black Bristles, 4 Rows

### Brushes Circular Brass



ITEM NO.	DESCRIPTION
BRS-172	Brush With Circular Brass Bristles - 3"
BRS-175	Brush With Circular Brass Bristles - 4"
BRS-178	Brush With Circular Brass Bristles - 5"
BRS-181	Brush With Circular Brass Bristles - 6"

### Yellow Cotton Brush



- Yellow Cotton Brush 30 x 16P

ITEM NO. : BRS-300

### Soft Felt Brush



- Soft Felt Brush 25 x 1P

ITEM NO. : BRS-330

### Yellow Muslin Buffs



- Yellow Muslin Buffs Stitched

ITEM NO.	DESCRIPTION
BRS-732	4" X 1/2"
BRS-735	5" X 1/2"
BRS-738	6" X 1/2"

### Unbleached Calico Buffs



ITEM NO.	DESCRIPTION
BRS-712	4" X 40
BRS-715	5" X 40
BRS-718	6" X 40

- Unbleached Calico Buffs with Leather Center Stitched

### Swiss Style Hammer



- Very useful Hammer for Light-Work.
- One end Flat and other chisel shaped.
- Fully Hardened and Tempered.
- Hammers are perfectly balanced.

ITEM NO.	HEAD	
	INCH	MM
HAM-082	2-1/4	55
HAM-086	2-1/2	62
HAM-090	2-3/4	70
HAM-094	3	75

### Chaser Hammer

ITEM NO.	SIZES
HAM-062	1"
HAM-066	1-1/8"
HAM-070	1-1/4"



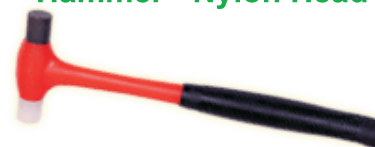
- Hardened and Tempered on Striking Faces.
- Supplied with Hardwood Handles.

### Forming Hammer



ITEM NO. : HAM-216

### Hammer - Nylon Head



- Hammer Nylon Head with Rubber Grip

ITEM NO. : HAM-252

### Six in One Hammers



- Very useful for small work i.e. for Jewellers.
- Used for Riveting, Blending, Chisel work.
- One end is made of Fibre to straighten the small items without spot.
- Hobby Tool.

ITEM NO.	DESCRIPTION
HAM-111	Aluminum Handle
HAM-112	Brass Handle

### Ball Pein Hammer



- Drop Forged Alloy Steel Head.
- Hardened and Tempered.
- Ground and Polished.
- Seasoned hardwood handles

ITEM NO.	SIZES
HAM-142	1 OZ.
HAM-146	2 OZ.
HAM-150	4 OZ.
HAM-154	8 OZ.

### Hammer Nylon



ITEM NO.	DESCRIPTION
HAM-262	Hammer Nylon with Wooden Handle 3/4" Face
HAM-266	Hammer Nylon with Wooden Handle 1" Face
HAM-270	Hammer Nylon with Wooden Handle 1-1/4" Face
HAM-274	Hammer Nylon with Wooden Handle 1-1/2" Face

### Wooden Mallet - Pearl Shape



ITEM NO. : HAM-524

### Plannishing Hammer



ITEM NO.	DESCRIPTION
HAM-202	One Side Chisel & Other Side Hex
HAM-204	Both Side Hex

### Raw Hide Mallet



ITEM NO.	DESCRIPTION
HAM-552	Raw Hide Mallet 1"
HAM-554	Raw Hide Mallet 1-1/4"
HAM-556	Raw Hide Mallet 1-1/2"
HAM-558	Raw Hide Mallet 1-3/4"
HAM-560	Raw Hide Mallet 2"

### Wooden Mallet



ITEM NO. : HAM-520

### Wooden Mallet



- Size 4" x 2"

ITEM NO. : HAM-522

### Automatic Center Punches



- Used For Marking Light Dotting to heavy punching without Having To Use A Hammer.

ITEM NO.	DESCRIPTION
HAM-702	Steel Body
HAM-704	Brass Body

### Punch Set of 16 & Riveting Stand



ITEM NO. : HAM-742

### Punch Set / Watch Staking Tools



### Carat Punch



ITEM NO. : HAM-752

ITEM NO.	DESCRIPTION
HAM-712	48 Punches, 4 Accessories & 1 Riveting Tool
HAM-716	80 Punches, 10 Accessories & 1 Riveting Tool
HAM-720	110 Punches, 21 Accessories & 1 Riveting Tool (Hammer Tone Finishing )
HAM-724	120 Punches, 21 Accessories & 1 Riveting Tool (Chrome Plated Finishing )

### Pearl Punch Boxes



ITEM NO.	DESCRIPTION
HAM-792	Set of 12 Punches
HAM-796	Set of 18 Punches
HAM-800	Set of 25 Punches

### Hole Closing Punch



- Set of 7 Pcs.

ITEM NO. : HAM-782

### Fixed Saw Frame - Standard



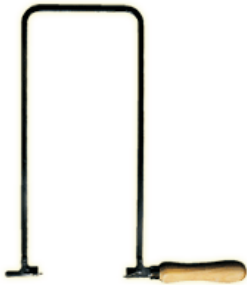
ITEM NO. : VSB-102

### Fixed Saw Frames - Size 5-1/2"



ITEM NO. : VSB-105

### Fixed Saw Frame - Size 11-1/2"



ITEM NO. : VSB-111

### Fixed Saw Frame - Size 8"



ITEM NO. : VSB-108

### Fixed Saw Frame - Superior



ITEM NO. : VSB-116

### Adjustable Saw Frame - Economy



ITEM NO. : VSB-160

### Adjustable Saw Frame - Deluxe



ITEM NO. : VSB-165

### Adjustable Saw Frame - Deluxe



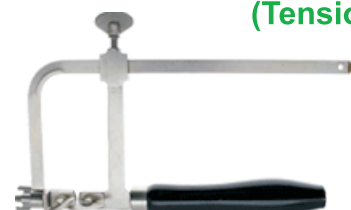
ITEM NO. : VSB-166

### Adjustable Saw Frame - German Type



ITEM NO.	SIZE
VSB-182	60 mm
VSB-183	70 mm
VSB-184	90 mm

### Adjustable Saw Frame - German Type (Tension Screw)



• Size 3"

ITEM NO. : VSB-186



### Vice - Fixed Base



ITEM NO.	SIZES
VSB-303	1-1/4"
VSB-306	1-5/8"
VSB-309	2"
VSB-312	2-3/8"

### Vice - Revolving without Clamp



ITEM NO.	SIZES
VSB-321	1-1/4"
VSB-324	1-5/8"
VSB-327	2"
VSB-330	2-3/8"

### Table Vice with Clamp



ITEM NO.	SIZES
VSB-363	1"
VSB-366	1-1/2"
VSB-369	2"
VSB-372	2-1/2"

### Table Vice Clamp Type Revolving



ITEM NO.	SIZES
VSB-387	1-1/4"
VSB-390	1-1/2"
VSB-391	2"
VSB-392	2-1/2"

### Hand Vice with Wing Nut



- Malleable Iron Jaws have Serrations.
- Wing Nut Adjustment.
- Very useful for Model Makers etc.
- Overall Length 6-1/2", Jaw Opening 5/8".

**ITEM NO. : PIN-100**

### Small Hand Vice (Hollow Wire Vice)



- Small Hand Vice is very useful for Jewellers for Holding Small Wire.
- Wing Nut Adjustment.
- Knurled Body for easy grip.

**ITEM NO. : PIN-300**

### Ring Vice with Bench Pin



**ITEM NO. : VSB-595**

### Double Lens Eye Glass



ITEM NO.	MAGNIFICATION
EYE-104	10X
EYE-108	12X
EYE-112	14X
EYE-116	20X

### Plastic Eye Glass



ITEM NO.	NO.
EYE-132	1
EYE-135	1-1/2
EYE-138	2
EYE-141	2-1/2
EYE-144	3
EYE-147	3-1/2
EYE-150	4
EYE-153	4-1/2

### Aluminum Eye Glass



ITEM NO.	NO.
EYE-175	1
EYE-178	1-1/2
EYE-181	2
EYE-184	2-1/2
EYE-187	3
EYE-190	3-1/2
EYE-193	4
EYE-196	4-1/2

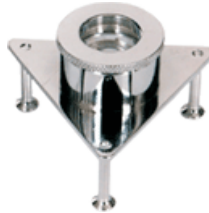
### Eye Glass



- High Quality Precise Eye Glass.
- Made from plastic.
- Must for Watchmakers, Research, Industry and Education.

ITEM NO.	NO.
EYE-212	1
EYE-215	1-1/2
EYE-218	2
EYE-221	2-1/2
EYE-224	3
EYE-227	3-1/2
EYE-230	4
EYE-233	4-1/2

### Eye Glass - Tripod (18 mm)



ITEM NO. : EYE-255

### Eye Glass - Tripod (21 mm)



ITEM NO. : EYE-257

### Eye Glass - Tripod (Round Shape) 10X



ITEM NO. : EYE-261

### Eye Glass - Tripod (Plastic) 10X Adjustable



ITEM NO. : EYE-265

### Eye Glass - Tripod Black Head (10X) (High Power)



ITEM NO. : EYE-259

### Spectacle Eye Glass with Clip



ITEM NO.	MAGNIFICATION POWER
EYE-453	2X
EYE-456	5X
EYE-459	7X
EYE-462	10X

### Eye Magnifier (10X) (Brass Textile Eye Glass)



- Eye Magnifier 10X

**ITEM NO. : EYE-280**

### Eye Magnifier (German Type Eye Glass)



- Eye Magnifier (8X, 10X, 12X)

ITEM NO.	MAGNIFICATION
EYE-285A	8X
EYE-285B	10X
EYE-285C	12X

### Eye Magnifier (10X) with Stand



- Eye Magnifier for Diamond with Stand 10X

**ITEM NO. : EYE-290**

### Eye Magnifier (Reflex Eye Glass)



- Eye Magnifier 10X

**ITEM NO. : EYE-292**

### Eye Magnifier with Bakelite Handle



ITEM NO.	SIZE
EYE-502	1-1/2"
EYE-503	2"
EYE-506	2-1/2"
EYE-509	3"
EYE-512	4"

### Eye Magnifier with Handle (All Plastic)



ITEM NO.	SIZE
EYE-522	2"
EYE-525	2-1/2"
EYE-528	3"
EYE-531	4"

### Eye Magnifier (3.5X) Binocular Type



- With Elastic Band

**ITEM NO. : EYE-950**

### Magnifier with Key Chain



**ITEM NO. : EYE-960**

### Folding Magnifier Single Lens (Plastic Cover)



ITEM NO.	MAGNIFICATION POWER	DIA.
EYE-342	10X	25 MM
EYE-346	10X	35 MM

### Folding Magnifier Triple Lens (Plastic Cover)



- High power inspection magnifiers for Machinists, Laboratory Technicians and Students.
- Made of three optical lenses.
- Lens can be used in combination to produce different powers.
- Swing away case of tough durable plastic.

ITEM NO.	MAGNIFICATION POWER	DIA.
EYE-322	10X	25 MM
EYE-326	10X	35 MM

### Folding Magnifier Double Lens (Plastic Cover)



ITEM NO.	MAGNIFICATION POWER	DIA.
EYE-332	7X	25 MM
EYE-336	7X	35 MM

### Folding Magnifier (Leather Cover)



- Handy Pocket Magnifiers.
- Ground and Polished Optical Glass.
- Leather pouch serves both as a handle and a protective case

ITEM NO.	MAGNIFICATION POWER
EYE-360	3.3X

### Folding Magnifier - Pocket



ITEM NO.	MAGNIFICATION POWER	COVER
EYE-370	10X	Aluminum

### Eye Loupes - Oval



Available in different Finish & Colours. (Golden, Chrome, Black, Rubber Black, Black Chrome, Red, Green, Yellow, Blue & many more)

ITEM NO.	SIZE	COVER
EYE-610	18 MM	Without Leather Cover
EYE-620	18 MM	With Leather Cover
EYE-630	21 MM	Without Leather Cover
EYE-640	21 MM	With Leather Cover

### Eye Loupes - Hex



Available in different Finish & Colours. (Golden, Chrome, Black, Rubber Black, Black Chrome, Red, Green, Yellow, Blue & many more)

ITEM NO.	SIZE	COVER
EYE-670	18 MM	Without Leather Cover
EYE-680	18 MM	With Leather Cover
EYE-690	21 MM	Without Leather Cover
EYE-700	21 MM	With Leather Cover

### Collapsible Eye Loupes



ITEM NO.	SIZE
EYE-402	2
EYE-406	2-1/2
EYE-410	3
EYE-414	3-1/2

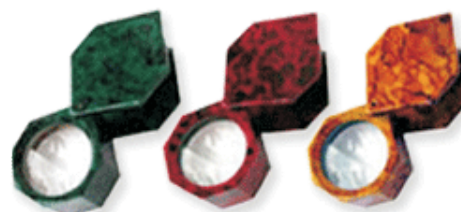
### Eye Loupes - Round with Stylish Colors



Available in Different Stylish Colours. (Black, Brown, Blue, Green, Red, Yellow etc. etc.).

ITEM NO.	SIZE	COVER
EYE-730	18 MM	Without Leather Cover
EYE-740	18 MM	With Leather Cover
EYE-750	21 MM	Without Leather Cover
EYE-760	21 MM	With Leather Cover

### Eye Loupes - Hex with Stylish Colors



Available in Different Stylish Colours. (Black, Brown, Blue, Green, Red, Yellow etc. etc.).

ITEM NO.	SIZE	COVER
EYE-800	18 MM	Without Leather Cover
EYE-810	18 MM	With Leather Cover
EYE-820	21 MM	Without Leather Cover
EYE-830	21 MM	With Leather Cover



### Screw Drivers Set of 5 Pcs. (Light)



- Set of 5 Pcs.
- Light Weight
- Available in Attractive Plastic Pouch.

**ITEM NO. : REW-100**

### Screw Drivers Set of 5 Pcs. (Heavy)



- Set of 5 Pcs.
- Heavy Weight
- Available in Attractive Plastic Pouch.

**ITEM NO. : REW-105**

### Screw Drivers Set of 10 Pcs.



- Set of 10 Pcs.
- Available in Attractive Plastic Pouch.

**ITEM NO. : REW-130**

### Screw Drivers Philip (Heavy)



- Set of 5 Pcs.
- Heavy Weight
- Available in Attractive Plastic Pouch.

**ITEM NO. : REW-155**

### Screw Drivers Philip (Light)



- Set of 5 Pcs.
- Anodised Top
- Light Weight
- Available in Attractive Plastic Pouch.

**ITEM NO. : REW-150**

### Screw Drivers Philip & Flat (Combined)



- Set of 6 Pcs.
- 3 Pcs. Philip & 3 Pcs. Flat
- Available in Attractive Plastic Pouch

**ITEM NO. : REW-170**

### Screw Drivers Reversible (Set of 6 Pcs.)



- Set of 6 Pcs.
- Available in Attractive Plastic Pouch.

**ITEM NO. : REW-200**

### Screw Drivers Reversible (Set of 7 Pcs.)



- Set of 7 Pcs.
- Available in Attractive Plastic Pouch.

**ITEM NO. : REW-205**



### Screw Drivers with Spare Blades (Set of 7 Pcs.)



- Set of 7 Pcs.
- With Spare Blades.
- Available in Attractive Plastic Pouch.

**ITEM NO. : REW-220**

### Screw Drivers with Spare Blades (Set of 9 Pcs.)



- Set of 9 Pcs.
- with Spare Blades.
- Available in Attractive Plastic Pouch.

**ITEM NO. : REW-225**

### Screw Drivers with Wooden Box (Set of 9 Pcs.)



- Screw Drivers – Set of 9 Pcs.
- with Extra Blades

**ITEM NO. : REW-330**

### Screw Drivers with Wooden Box (Set of 6 Pcs.)



- Screw Drivers – Set of 6 Pcs.

**ITEM NO. : REW-325**

### Screw Drivers with Fixed Stand



- Screw Drivers – Set of 9 Pcs.
- with Extra Blades
- Fixed Stand

**ITEM NO. : REW-370**

### Screw Drivers with Revolving Stand (Heavy)



- Screw Drivers – Set of 9 Pcs.
- with Extra Blades
- Heavy Stand

**ITEM NO. : REW-365**

### Screw Drivers with Revolving Stand (Light)



- Screw Drivers – Set of 9 Pcs.
- with Extra Blades

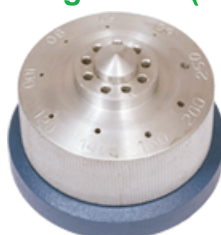
**ITEM NO. : REW-360**

### Screw Drivers Sharpener



**ITEM NO. : REW-450**

### Screw Drivers Revolving Stand (Heavy)



**ITEM NO. : REW-410**

### Screw Drivers Revolving Stand (Light)



**ITEM NO. : REW-405**

### Tweezer for Cell Testing



ITEM NO. : REW-525

### Tweezer - Plastic



ITEM NO. : REW-530

### Tweezer - Brass



ITEM NO. : REW-535

### Tweezer - Stainless Steel



ITEM NO. : REW-540

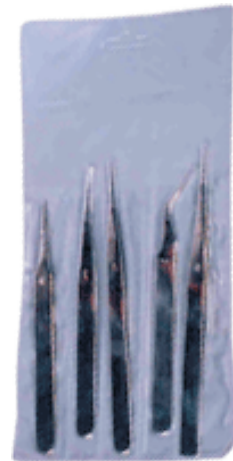
### Tweezers for Diamonds - Colored



- Available in Different Colours of Your Choice. Black, Brown, Blue, Green, Red, Yellow

ITEM NO. : REW-545

### Antimagnetic Tweezers



- Set of 5 Pcs.
- Stainless Steel.
- Available in Attractive Plastic Pouch.

ITEM NO. : REW-570

### Plier - Long Chain Nose



- Plier 5.1/2" Long Chain Nose Heavy with V-Spring

**ITEM NO. : PLR-030**

### Plier - Long Nose with Comfort Grip



- Size: 5-1/2"

**ITEM NO. : PLR-035**

### Plier - Chain Nose with V Spring



ITEM NO.	SIZE
PLR-046	4-1/2"
PLR-048	5" (Heavy)

### Plier - Chain Nose with Spring



- Size: 5"

**ITEM NO. : PLR-054**

### Plier - Chain Nose with Comfort Grip



- Size: 5"

**ITEM NO. : PLR-060**

### Plier - Round Nose with V Spring



ITEM NO.	SIZE
PLR-070	4-1/2"
PLR-072	5" (Heavy)

### Plier - Round Nose with Spring



- Size: 5"

**ITEM NO. : PLR-076**

### Plier - Round Nose with Comfort Grip



- Size: 5"

**ITEM NO. : PLR-080**

### Plier - Bent Nose with V Spring



- Bent Chain Nose

ITEM NO.	SIZE
PLR-090	4-3/4"
PLR-092	5-1/4" (Heavy)

### Plier - Bent Nose with Spring



- Bent Chain Nose (5-1/4")

**ITEM NO. : PLR-096**

### Plier - Flat Nose with V Spring Plier - Flat Nose with Spring



ITEM NO.	SIZE
PLR-110	4-1/2"
PLR-112	5" (Heavy)



- Size: 5"

**ITEM NO. : PLR-116**

### Plier - Flat Nose with Comfort Grip



- Size: 5"

**ITEM NO. : PLR-120**

### Plier - Flat Nose with Brass Tip



**ITEM NO. : PLR-200**

### Plier - Flat Nose with Nylon Jaw



**ITEM NO. : PLR-190**

### Plier - Long Flat Nose



- Size: 7-1/2"
- Stainless Steel

**ITEM NO. : PLR-210**

### Plier - Side Cutter with V Spring



ITEM NO.	SIZE
PLR-130	4-1/2"
PLR-132	5" (Heavy)
PLR-134	5-1/4" (Extra Heavy)

### Plier - Side Cutter with Spring



- Size: 5"

**ITEM NO. : PLR-138**

### Plier - Top Cutter with V Spring



ITEM NO.	SIZE
PLR-150	4-1/2"
PLR-152	5" (Heavy)

### Plier - Top Cutter with Spring



- Size: 5"

**ITEM NO. : PLR-156**

### Plier - Side Cutter with Comfort Grip



- Size: 5"

**ITEM NO. : PLR-142**

### Plier - Top Cutter with Comfort Grip



- Size: 5"

**ITEM NO. : PLR-160**

### Plier - Rosary Chain Nose



- With Cutter

**ITEM NO. : PLR-230**

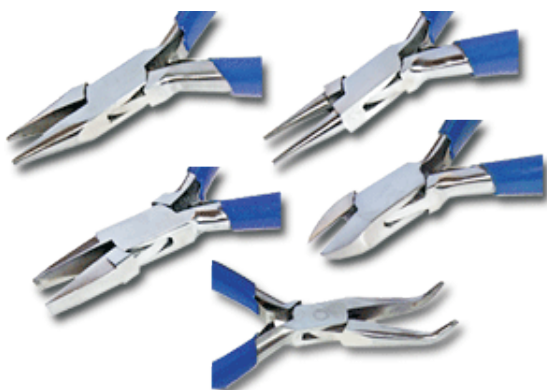
### Plier - Rosary Round Nose



- With Cutter

**ITEM NO. : PLR-235**

### Pliers - Extra Long



- Size: 6-1/2"
- Heavy Duty

### Plier - Extra Long Chain Nose

**ITEM NO. : PLR-170**

### Plier - Extra Long Round Nose

**ITEM NO. : PLR-172**

### Plier - Extra Long Flat Nose

**ITEM NO. : PLR-174**

### Plier - Extra Long Bent Nose

**ITEM NO. : PLR-176**

### Plier - Extra Long Side Cutter

**ITEM NO. : PLR-178**

### Plier - Extra Long Set of 5 Pcs.

**ITEM NO. : PLR-180**



**Plier Chain Link Remover  
Round Nose Type**



**ITEM NO. : PLR-245**

**Plier Chain Link Remover  
Flat / Round Nose Type**



**ITEM NO. : PLR-250**

**Plier Chain Link Remover  
For Watch Bands**



ITEM NO.	DESCRIPTION
PLR-256	For Ladies Watch Band
PLR-258	For Gents Watch Band

**Plier Type  
Chain Link Pin Remover**



- Plier Type Chain Link Remover With Extra Pins
- Packed In Leather Pouch

**ITEM NO. : PLR-265**

**Plier Wire Wrapping**



- Hollow / Stepped Nose

**ITEM NO. : PLR-370**

**Plier Wire Bending**



- Stainless Steel

**ITEM NO. : PLR-380**

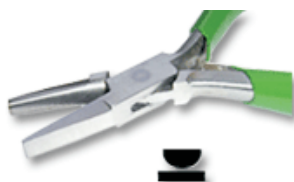
**Plier Ring Holding**



- Size: 5-3/4"
- Stainless Steel

**ITEM NO. : PLR-330**

**Plier Ring Bending  
Flat / Half Round Nose**



- Plier for Ring Bending Flat / Half Round Nose

**ITEM NO. : PLR-340**

**Plier Ring Bending**



- 165 mm

**ITEM NO. : PLR-342**

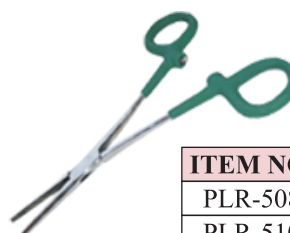
**Plier (Hemostat)**



- Stainless Steel

ITEM NO.	SIZE
PLR-502	5"
PLR-504	6"

**Plier (Hemostat)  
with Insulated Handle**



ITEM NO.	SIZE
PLR-508	5"
PLR-510	6"

### Miniature Pliers 6 Pcs. Set



- Set includes Chain Nose, Round Nose, Flat Nose, End Cutter, Side Cutter, Chain Flat Nose.
- Available individually and in Set.
- Available in Light Duty & Heavy Duty.
- Finest Quality, Stainless Steel Precision Pliers.
- Box Joints to eliminate side play.
- Heads are polished and Handles have Vinyl Cushion Grips.

### Miniature Plier Set 4 Pcs. in Canvas Wallet



- Plier Set In Canvas Wallet
- Set Includes Chain, Flat, Round & Side Cutter

**ITEM NO. : PLR-710**

### Miniature Plier Set 4 Pcs. in Pouch



- Plier Set In Pouch
- Set Includes Chain, Flat, Round & Side Cutter

**ITEM NO. : PLR-720**

ITEM NO.	DESCRIPTION
PLR-700	Set of Six Miniature Pliers – Light Duty
PLR-705	Set of Six Miniature Pliers – Heavy Duty

### Plier Combination



- Plier Combination Chain Nose with Cutter

**ITEM NO. : PLR-220**

### Miniature Plier Set 4 Pcs. in Nylon Wallet



- Plier Set In Nylon Wallet
- Set Includes Chain, Flat, Round & Side Cutter

**ITEM NO. : PLR-715**

### Pliers Forming



ITEM NO.	DESCRIPTION
PLR-280	A Hollow / Round Forming Plier
PLR-282	B Half Round / Hollow Forming Plier
PLR-284	C Flat / Round Forming Plier
PLR-286	D Flat / Half Round Forming Plier
PLR-288	SET OF ABOVE SAID FOUR PLIERS

### Plier Loop Closing



- Size: 5"
- Stainless Steel

**ITEM NO. : PLR-310**

### Plier Looping



- Flat / Round Nose

**ITEM NO. : PLR-320**

### Plier Stone Setting



- Plier for Stone Setting

**ITEM NO. : PLR-350**

### Bead Crimping Plier



- Size: 4-1/2"
- Stainless Steel

**ITEM NO. : PLR-360**

### Plier Spectacles



- with Nylon Jaws

**ITEM NO. : PLR-390**

### Plier Punching



- Plier For Punching Holes in Leather Belt

**ITEM NO. : PLR-400**

### Plier Bow Opening



- Stainless Steel

**ITEM NO. : PLR-420**

### Plier Shear



ITEM NO.	DESCRIPTION
PLR-430	Plier Shear For Electronic Industry (Hardened) Nipper Multitec-07
PLR-435	Plier Shear For Electronic Industry (Hardened) Nipper Multitec-06

### Jeweler Snips



ITEM NO.	DESCRIPTION
PLR-810	Jeweler Snip/Cutter With Lock
PLR-812	Jeweler Snip/Cutter Without Lock

### Plier Rack Stand



**ITEM NO. : BRT-625**

### Plier Knotching



- Plier Watch Strap Knotching 1mm & 3mm Width

**ITEM NO. : PLR-410**

### Plier Rack



ITEM NO.	DESCRIPTION
BRT-610	With Drawer
BRT-612	Without Drawer

### Plier Stand



- Haldoo Wood

ITEM NO.	DESCRIPTION
BRT-635	10 HOLES
BRT-640	12 HOLES

### Jaxa Case Opener with Card Box



- with 12 Different Nobs.

**ITEM NO. : WOR-050**

### Jaxa Case Opener with Wooden Case



- with 12 Different Nobs.

**ITEM NO. : WOR-052**

### Case Opener Pocket Type



- Case opening Tool for Screw - Back Cases
- Pocket Type with Central Adjusting Screw

**ITEM NO. : WOR-060**

### Case Opener Butterfly Type



**ITEM NO. : WOR-075**

### Case Opener Suction Type



**ITEM NO. : WOR-080**

### Case Opener for Quartz



**ITEM NO. : WOR-085**

### Case Opener - Knife



**ITEM NO. : WOR-090**

### V Shape Opener



- with 2 Nobs.

**ITEM NO. : WOR-110**

### Rolex Opener



- With 6 different dies.
- Hardened and Tempered.

**ITEM NO. : WOR-120**

### Chain Link Pin Remover (Brass Body)



- Brass Body

**ITEM NO. : WOR-210**

### Chain Link Pin Remover (Aluminum Body)



- Aluminum Body

**ITEM NO. : WOR-212**

### Chain Link Pin Remover (Superior Quality)



- Superior Quality Chain Link Remover with 2 Levels to accommodate all Bracelets.

**ITEM NO. : WOR-220**

### Link Remover (Set of 3 Pins)



ITEM NO.	PIN SIZES
WOR-260A	0.60mm, 0.80mm & 1mm
WOR-260B	0.60mm, 0.80mm & 1mm

### Link Remover without Wooden Stand



**ITEM NO. : WOR-252**

### Link Remover with Wooden Stand



**ITEM NO. : WOR-254**



**Spring Bar Remover with MM**



ITEM NO. : WOR-303

**Spring Bar Remover (Brass Body)**



ITEM NO. : WOR-306

**Spring Bar Remover (Aluminum Body)**



ITEM NO. : WOR-309

**Spring Bar Remover (Nickelled)**



ITEM NO. : WOR-312

**Spring Bar Remover (Simple)**



ITEM NO. : WOR-315

**Spring Bar Remover with Rubber**



ITEM NO. : WOR-325

**Spring Bar Tool (European Style)**



- With Black Replaceable Pins

ITEM NO.	DESCRIPTION
WOR-330	Aluminum Body
WOR-332	Brass Body

**Spring Bar Tool (Nickelled)**



ITEM NO. : WOR-335

**Spring Bar & Pull Out Pusher**



- Nickelled

ITEM NO. : WOR-340

**Glass Remover with Plate (Plastic Handle)**



ITEM NO. : WOR-410

**Glass Remover with Plate (Aluminum Handle)**



ITEM NO. : WOR-412

**Hand Remover - Presto**



ITEM NO. : WOR-452

**Hands Presser for Fitting Hands**



- Hands Presser for Fitting Hands without Scratching the Dials (Set of 3 Pcs.)

ITEM NO. : WOR-512

**Hand Remover - Steel (Set of 2 Pcs.)**



ITEM NO. : WOR-458

**Hand Remover - Plunger**



ITEM NO. : WOR-455

### Hands Presser - Reversible



- Hands Presser Reversible for Gents and Ladies

**ITEM NO. : WOR-515**

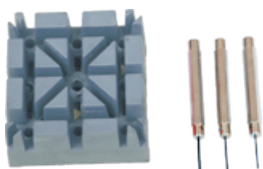
### Simple - Hands Presser



- Simple Hands Presser with Nylon Tips

**ITEM NO. : WOR-518**

### Plastic Blocks



- Available with 3 different pins.
- Pins sizes 0.6, 0.8 & 1.00 mm.

**ITEM NO. : WOR-610**

### Wooden Blocks



- Available without Pins
- Available with Pins

ITEM NO.	DESCRIPTION
WOR-616	Without Pins
WOR-618	With Pins (Pins sizes 0.6, 0.8 & 1.00 mm )

### Wooden Case Holder



**ITEM NO. : WOR-710**

### Watch Case Holders (Aluminum Body) with 4 Pins



**ITEM NO. : WOR-694**

### Watch Case Holders (Aluminum Body) Movement Type



**ITEM NO. : WOR-696**

### Watch Case Holders (Aluminum Body) Burgen Type



**ITEM NO. : WOR-698**

### Hands Presser (Set of 9)



- Available with 9 sticks.
- Nickel Plated

**ITEM NO. : WOR-530**

### Hands Presser with Center Spring



- With 9 Nobs.

**ITEM NO. : WOR-535**

### Case Holder with Clamp (Aluminum Body)



**ITEM NO. : WOR-720**

### Movement Holder - Quartz



ITEM NO. : WOR-752

### Movement Holder - Plastic (Set of 12 Pcs.)



ITEM NO. : WOR-756

### Movement Holder - Plastic (Block Type)



ITEM NO. : WOR-754

### Movement Holder (Swiss Style)



ITEM NO.	DESCRIPTION
WOR-758A	Holder For Movements, Ladies, Swiss Style
WOR-758B	Holder For Movements, Gents, Swiss Style

### Movement Holder - Multipurpose (Aluminum)



ITEM NO. : WOR-770

### Movement Holder - Multipurpose (Brass Nickelled)



- Holder for Movements, Brass Nickelled, 8-in-1

ITEM NO. : WOR-775

### Universal Work Holder



ITEM NO. : WOR-800

**Glass Fitting Machine  
Small with 6 Nylon Dies**



**ITEM NO. : WEQ-102**

**Glass Fitting Machine  
with 12 Nylon Dies**



**ITEM NO. : WEQ-105**

**Glass Fitting Machine  
with 12 Nylon Dies  
& 4 Square Dies**



**ITEM NO. : WEQ-108**

**Glass Fitting Machine  
Round Base  
with 14 Nylon Dies**



**ITEM NO. : WEQ-111**

**Glass Fitting Machine  
with 28 Aluminum Dies**



**ITEM NO. : WEQ-120**

**New Simran  
Glass Fitting Machine  
with 4 Dies**



**ITEM NO. : WEQ-130**

**Apollo Glass Fitting Machine  
with 8 Nylon Dies**



**ITEM NO. : WEQ-140**

**Master Jig  
Glass Fitting Machine  
with 8 Nylon Dies**



**ITEM NO. : WEQ-150**

**Rolex Glass Fitting Machine  
with 6 Dies**



**ITEM NO. : WEQ-160**

**Multipurpose Press**



- Available with 6 different pins.
- Blocks available in matching colours.

**ITEM NO. : WEQ-180**

**Hands Presser  
with Center Spring**



- With 9 Nobs.

**ITEM NO. : WOR-535**



### Demagnetising Appliance



- AC 220 V, 50 cycles

**ITEM NO. : WEQ-410**

### Electronic Line Freeing Machine



- For Quartz Watches

**ITEM NO. : WEQ-420**

### Watch Cleaning Machine



- With 5 Speed Regulator

**ITEM NO. : WEQ-510**

### Watch Glass Polishing Machine (Single Disk)



- Single Phase 1440 RPM 220/230 Volts, 1/6 H.P. (With two types of Polishing Abrasive)

**ITEM NO. : WEQ-520**

### Watch Glass Edging & Polishing Machine



- Direct Motor Drive 1/6 H.P. 1440 RPM 220/230 Volts A.C.

**ITEM NO. : WEQ-535**

### Watch Glass Polishing Machine (Double Disk)



- Double Motor, Double Disc
- Single Phase 1440 RPM 220/230 Volts, 1/6 H.P. (With two types of Polishing Abrasive)

**ITEM NO. : WEQ-525**

### Auto Winder



- Machine for winding & testing automatic watches 3 RPM.

**ITEM NO. : WEQ-550**

### Apparatus for Testing Water Resistance of Watches



- With Good Quality Air Foot Pump.

**ITEM NO. : WEQ-560**

### Buffing & Grinding Machine



- 2880 R.P.M. 1/6 H.P. A.C. 220/230 Volts
- With 2 Buffing Compounds & One Fine Buff Extra.

**ITEM NO. : WEQ-590**

### Dust Blower (with Long Nozzle)



ITEM NO. : WMS-120

### Dust Blower (with Brass Nozzle)



ITEM NO. : WMS-125

### Dust Blower - Small (with Long Nozzle)



ITEM NO. : WMS-130

### Watch Battery Changing Kit (with Pouch)



- Case Opener - Pocket Type
- Case Opener - Knife
- Case Opener for Quartz
- Dial Cleaning Brush
- Tweezer - Stainless Steel
- Tweezer - Plastic
- Flat Nose Plier
- Screw Driver

ITEM NO. : WMS-150

### Watch Battery Changing Kit (with Leather Case - 8 Pcs.)



- Case Opener - Pocket Type
- Case Opener - Knife
- Case Opener for Quartz
- Dial Cleaning Brush
- Tweezer - Stainless Steel
- Tweezer - Plastic
- Flat Nose Plier
- Screw Driver

ITEM NO. : WMS-153

### Watch Battery Changing Kit (with Leather Case - 9 Pcs.)



- Spring Bar Remover – With MM
- Tweezer - Plastic
- Tweezer – Stainless Steel
- Dial Cleaning Brush
- Case Opener – Knife
- Case Opener – Pocket Type
- Screw Driver (3 Pcs.)

ITEM NO. : WMS-156

### Set of 4 Watch Case Openers



- Case Opener - Jaxa Style
- Case Opener - Pocket Type
- Case Opener - Suction Type
- Case Opener - Knife
- Leather Case

ITEM NO. : WMS-171

### Set of 2 Watch Case Openers



- Case Opener - Jaxa Style
- Case Opener - Knife
- Leather Case

ITEM NO. : WMS-174

### Watchmakers' Tool Sets 4 Pcs.



- Case Opener - Jaxa Style
- Case Opener - Pocket Type
- Case Opener - Knife
- Rolex Opener
- Leather Case

ITEM NO. : WMS-177

### Oil Cups - 3 Holes



ITEM NO. : WMS-310

### Benzene Cup



ITEM NO. : WMS-320

### Watch Oil



ITEM NO.	DESCRIPTION
WMS-360A	Oil For Quartz Watches 2cc
WMS-360B	Oil Superfine For Wrist Watches, 10ml

### Clock Oil



- Oil Superfine for Alarm and Wall Clock, 20ml

ITEM NO. : WMS-370

### Riveting Hole Plate (Round)



ITEM NO.	DESCRIPTION
WMS-550	Small - 16 Holes
WMS-555	Big - 30 Holes
WMS-560	Big - 24 Holes + 1 Serrcion

### Riveting Hole Plate (Rectangle)



ITEM NO.	DESCRIPTION
WMS-570	Small - 36 Holes
WMS-575	Big - 36 Holes, Size 1" X 3"

### Grease Lubricating



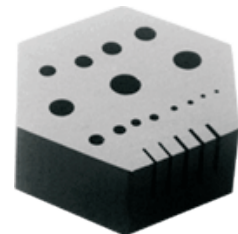
ITEM NO. : WMS-340

### Silicon Grease



ITEM NO. : WMS-350

### Riveting Hole Plate (Hexagonal)



ITEM NO.	DESCRIPTION
WMS-585	Small with 5 Serrcion
WMS-590	Big with 5 Serrcion

### Dial Cleaning Brush



ITEM NO. : BRS-060

### O - Rings



- Set of 100 Pcs.

ITEM NO.	SIZE
WMS-450A	0.5 mm
WMS-450B	0.6 mm
WMS-450C	0.7 mm

### Dust Cover



ITEM NO. : WMS-110

### Bench Pins - Wooden



ITEM NO.	DESCRIPTION
BEN-060	5-1/4" X 2-1/4"
BEN-062	6-1/4" X 2-1/2"
BEN-064	7" X 1-3/4"
BEN-066	7" X 2-3/4"

### Bench Pin - Spring Load



ITEM NO. : BEN-086

### Burnisher - Straight



ITEM NO. : BEN-135

### Prong Pusher



ITEM NO. : BEN-180

### Bracelet Setting Wheel (Holder)



ITEM NO. : BEN-540

### Wooden Bench Pin



- Wooden Bench Pins 11-264

ITEM NO. : BEN-072

### V - Slot Bench Pin



ITEM NO. : BEN-084

### Burnisher - Curved



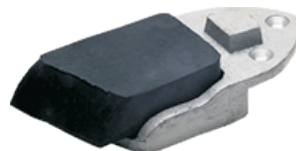
ITEM NO. : BEN-140

### Prong Lifter



ITEM NO. : BEN-200

### Bench Filling Block



ITEM NO. : BEN-110

### Bench Pin in Metal Holder



ITEM NO. : BEN-078

### Bench Pin with Combination Anvil



ITEM NO. : BEN-094

### Bezel Roller



ITEM NO. : BEN-160

### Bezel Pusher



ITEM NO. : BEN-170

### Hand Operated Ring Expander



ITEM NO. : BEN-620



### Chain Cutter



**ITEM NO. : BEN-640**

### Machinist Square



ITEM NO.	DESCRIPTION
BEN-802	2"
BEN-805	3"

### Tap Holders



- Tap Holder 1/4"

**ITEM NO. : BEN-830**

### Automatic Center Punches



- Used For Marking Light Dotting to heavy punching without Having To Use A Hammer.
- Steel Body

ITEM NO.	DESCRIPTION
HAM-702	Steel Body
HAM-704	Brass Body

### Callipers & Dividers



ITEM NO.	DESCRIPTION
BEN-840	Calliper Inside Premium 4"
BEN-845	Calliper Outside Premium 4"
BEN-850	Divider Premium 3"

### Burr Boxes



ITEM NO.	DESCRIPTION
BRT-360	36 HOLES
BRT-362	72 HOLES
BRT-364	100 HOLES
BRT-366	200 HOLES

### Handy Block



- Wooden Handy Block with 88 Holes

**ITEM NO. : BRT-390**

### Third Hand Base



ITEM NO. : CST-080

### Third Hand Base



ITEM NO. : CST-083

### Magnetic Hand Base



ITEM NO. : CST-086

### Ingot Mould



- Casting Block (Ingot Mould) of Cast Iron, 3 Lines

ITEM NO. : CST-210

### Glass Alcohol Lamp



ITEM NO.	DESCRIPTION
CST-530	With 3/16" Wick, Adjustable
CST-532	Extra Wick 3/16"

### Glass Alcohol Lamp



ITEM NO.	DESCRIPTION
CST-540	With 1/2" Wick
CST-542	Extra Wick 1/2"

### Ingot Mould - High Quality



- High Quality Ingot Mould 8", Black Anodised, High Grade Steel

ITEM NO. : CST-215

### Reversible Ingot Mould



- Reversible Ingot Mould, Flat Plate or Wire

ITEM NO. : CST-220

### Adjustable Ingot Mould



ITEM NO.	DESCRIPTION
CST-241	150 DWT
CST-244	200 DWT
CST-247	500 DWT

### Ingot Mould - Open



ITEM NO.	DESCRIPTION
CST-261	90 X 35 X 35 mm
CST-264	120 X 45 X 30 mm
CST-267	155 X 65 X 40 mm

### Rubber Sprue Bases



ITEM NO.	SIZE
CST-402	2"
CST-404	2-1/2"
CST-406	3"
CST-408	3-1/2"
CST-410	4"
CST-412	5"

### Rubber Mixing Bowls



ITEM NO.	DESCRIPTION
CST-152	4"
CST-155	6"
CST-158	8"

### Bracelet Size Gauge



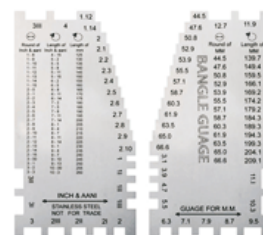
ITEM NO.	DESCRIPTION
JGS-068	In Metal, US Standard In Inches
JGS-070	In metal, In Cm European Standard # 15-23

### Bangle Gauge - Brass



ITEM NO. : JGS-075A

### Bangle Gauge - S.S.



ITEM NO. : JGS-075B

### Steel Rules



ITEM NO.	TYPE	GRADUATION
JGS-822	6" Pocket Rule	In inches 32nd 64ths
JGS-824	6" Pocket Rule	In inches and m.m.
JGS-826	6" Rule	In inches and m.m.
JGS-828	12" Rule	In inches and m.m.

### Pearl & Diamond Gauge



- Plastic

ITEM NO. : JGS-135

### Gauge - Vernier (Metal)



- Size : 5"

ITEM NO. : JGS-850

### Gauge - Vernier (Brass)



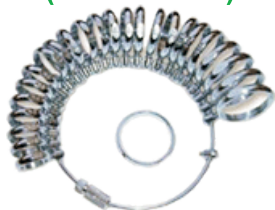
ITEM NO.	MEASURING RANGE	
	INCH	MM
JGS-840	0 - 3	0 - 75
JGS-842	0 - 4	0 - 100

### Gauge Finger Sizes / Ring Sizer



ITEM NO.	DESCRIPTION
JGS-322	Wide Band U.S. Standard 1-15 (29 Rings)
JGS-325	Slim Band U.S. Standard 1-15 (29 Rings)
JGS-328	Wide Band A - Z, 1 - 6 (32 Rings)

### Gauge Finger Sizes / Ring Sizer (Removable)



- Removable
- Gauge Ring Metal Half Round Sizes 13-25 (Removable)

ITEM NO. : JGS-355

### Gauge Finger Sizes / Ring Sizer (Half Round)



- Half Round

ITEM NO.	DESCRIPTION
JGS-342	U.S. Standard 1-15 (29 Rings)
JGS-345	U.S. Standard 1-13 (25 Rings)
JGS-348	A - Z, 1 - 6 (32 Rings)

### Gauge Finger Sizes / Ring Sizer (Metal)



- Finger Size Metal, A-Z + 6 with Half Sizes (63 Rings)

**ITEM NO. : JGS-360**

### Gauge Finger Sizes / Ring Sizer (Wedding Ring Style)



ITEM NO.	DESCRIPTION
JGS-365	Wedding Ring Style Finger Gauge 1 – 15 (29 Rings)
JGS-368	Wedding Ring Style Finger Gauge A - Z, 1 – 6 (32 Rings)

### Gauge Finger Sizes / Ring Sizer (Plastic)



- Universal

**ITEM NO. : JGS-425**

### Gauge Ring Metal Sizes (Universal)



ITEM NO.	DESCRIPTION
JGS-392	Gauge Ring Metal Sizes Universal 1-36, 41-76, 1-15, 13-24 (36 Rings)
JGS-395	Gauge Ring Metal Sizes for South East Asian Market 1-33 (33Rings)

### Gauge Finger Sizes / Ring Sizer (Plastic)



ITEM NO.	DESCRIPTION
JGS-430	U.S. Standard 1-15 (29 Rings)
JGS-433	A-Z British Standard (26 Rings)

### Gauge Finger Sizes / Ring Sizer (Plastic)



- Plastic Finger Sizes 15 Mm To 22 Mm (15 Rings)

**ITEM NO. : JGS-440**

### Bangle Sizer (Plastic)



**ITEM NO. : JGS-482**

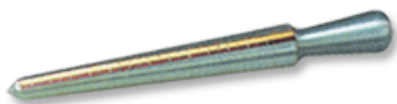
### Bangle Sizer (Brass)



**ITEM NO. : JGS-485**



### Ring Stick - Aluminum



**ITEM NO. : JGS-560**

### Ring Stick



ITEM NO.	DESCRIPTION
JGS-565	Gauge Ring Stick 1-33 Superior For South-East Asian Markets

### Ring Stick with Plastic Handle



**ITEM NO. : JGS-615**

### Ring Stick



ITEM NO.	DESCRIPTION
JGS-578	Gauge Ring Stick M.S, U.S. Standard 1-13 Plain
JGS-581	Gauge Ring Stick M.S, U.S. Standard 1-13 Grooved

### Ring Stick - Plastic



- Plastic Ring Stick, Universal for U.S. & European Standard Sizes

**ITEM NO. : JGS-618**

### Ring Stick - Universal



- Ring Stick Universal, Aluminum With Markings D To Z ( British Std), 2 To 14 (U.S. Std.), 41 To 73 (European Std.), 1 To 33 (South East Asian Std.)

**ITEM NO. : JGS-600**

### Ring Stick with Wooden Handle



**ITEM NO. : JGS-640**

### Ring Stick - Plastic



ITEM NO.	DESCRIPTION
JGS-625	Gauge Ring Stick Plastic, U.S. Standard 1-15
JGS-628	Gauge Ring Stick Plastic A-Z British Standard

### Large Ring Mandrel



**ITEM NO. : JGS-760**

### Wooden Mandrel



ITEM NO.	DESCRIPTION
JGS-770	Wooden Mandrel 6" for Rings
JGS-772	Wooden Mandrel 7" for Rings

Ring Clamp - Fly Nut



ITEM NO. : JGS-922

Ring Clamp - Wooden



ITEM NO. : JGS-925

Ring Clamp - Plastic



ITEM NO. : JGS-928

Ring Clamp - European Style



- With Parellel Jaws

ITEM NO. : JGS-935

Black Ring Clamp  
with Nylon Jaws



- Black Aluminum Ring Clamp with Nylon Jaws

ITEM NO. : JGS-940

Ring Clamp  
with Bench Pin



ITEM NO. : JGS-950

Wood Ring Vice  
with Fly Nut



ITEM NO. : JGS-970

Wood Ring Vice  
(with Brass Nut)



ITEM NO. : JGS-972

**Ring Expanding Machine**



**ITEM NO. : JEQ-210**

**Ring Expanding Machine with 12 Collets**



**ITEM NO. : JEQ-220**

**Ring Expander cum Bender**



**ITEM NO. : JEQ-230**

**Ring & Bangle Rounding Machine**



**ITEM NO. : JEQ-260**

**Double Head Ring Stretcher / Expander**



- With 2 Cones & Reducer

ITEM NO.	DESCRIPTION
JEQ-272	1 -15
JEQ-273	1 - 36

**Ring Stretcher with 17 Dies**



- Available in Light & Heavy Model

ITEM NO.	DESCRIPTION
JEQ-280	Without Wooden Box
JEQ-285	With Wooden Box

**Stepped Ring Stretcher**



**ITEM NO. : JEQ-295**

**Simple Ring Stamping Machine**



**ITEM NO. : JEQ-570**

**Hand Operated Ring Expander**



**ITEM NO. : BEN-620**

### Bangle Flattening Machine



ITEM NO. : JEQ-450

### Bangle Sizing Machine



- With 17 Bangle Dies

ITEM NO. : JEQ-470

### Bangle Expanding Machine



- 26 Strips

ITEM NO. : JEQ-460

### Rolling Mills (3 inches)



- With 3 Extra Rollers

ITEM NO. : JEQ-670A

### Rolling Mills (3 inches)



- Having A Guard On Both Sides
- With 3 Extra Rollers

ITEM NO. : JEQ-670B

### Stamping Machine



ITEM NO. : JEQ-550

### Reduction Rolling Mill with Gear Reduction (4 inches)



ITEM NO. : JEQ-672

### Reduction Rolling Mill with Gear Reduction (5 inches)



ITEM NO. : JEQ-674

### Zig Zag Machine



ITEM NO. : JEQ-610

### Bracelet Setting Wheel (Holder)



ITEM NO. : BEN-540

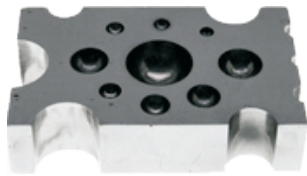
### Hand Drill Machine



ITEM NO.	SIZES
JEQ-635	3/16"
JEQ-640	1/4"



### Dapping Die & Design Block



- Size : 4" x 2-1/2" x 1"

**ITEM NO. : DAP-032**

### Dapping Die & Design Block with 4 Circular Holes



- Dapping Die and Design Block with 4 Circular Holes and 7 Semi Circular at edges
- Size: 2-1/2" X 2" X 1"

**ITEM NO. : DAP-034**

### Flat Dapping Block



- Flat Dapping Block with 27 Depressions
- Size: 5" x 2-1/2" x 3/4"

**ITEM NO. : DAP-060**

### Doming Block - Steel



ITEM NO.	SIZE
DAP-152	2" x 2" x 2"
DAP-154	2-1/2" x 2-1/2" x 2-1/2"
DAP-156	3" x 3" x 3"
DAP-158	4" x 4" x 4"

### Doming Block - Brass



ITEM NO.	SIZE
DAP-172	1"
DAP-174	1-1/4"
DAP-176	1-1/2"
DAP-178	2"

### Doming Block - Bronze



ITEM NO.	SIZE
DAP-202	20mm
DAP-204	25mm
DAP-206	30mm
DAP-208	35mm
DAP-210	40mm
DAP-212	45mm
DAP-214	50mm
DAP-216	55mm
DAP-218	60mm

### Doming Block - Wood



- Doming Block Wood with 2 Punches

**ITEM NO. : DAP-230**

### Doming Punch - Steel



- Packed in Card Board Box

ITEM NO.	DESCRIPTION
DAP-292	Set Of 12
DAP-294	Set Of 18
DAP-296	Set Of 24
DAP-298	Set Of 36

### Dapping Punch - Steel



- On Wooden Stand

ITEM NO.	DESCRIPTION
DAP-402	Set Of 12
DAP-404	Set Of 18
DAP-406	Set Of 24
DAP-408	Set Of 36

### High Quality Dapping Punch



- On Wooden Stand

ITEM NO.	DESCRIPTION
DAP-422	Set of 12
DAP-424	Set of 24

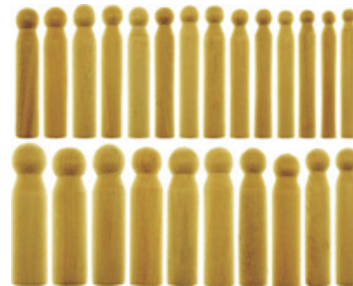
### Dapping Punch Sets



- 24 Punches with a 2" x 2" x 2" block in a wooden stand

**ITEM NO. : DAP-430**

### Wooden Dapping Punch



- Set of 24 Pcs.

**ITEM NO. : DAP-442**

### Wooden Stand for Dapping Punch



ITEM NO.	DESCRIPTION
DAP-802	12 Holes
DAP-804	18 Holes
DAP-806	24 Holes
DAP-808	36 Holes

### Disc Cutter



- Set of 7, Size 4(1/4"), 5(5/16"), 6(3/8"), 7(7/16"), 8(1/2"), 9(9/16"), 10(5/8")

**ITEM NO. : DAP-650**

### Anvil



- Made of Best Steel
- Hardened & Polished
- Cast Iron base

**ITEM NO. : JMS-110**

### Anvil - Heavy Duty



- Cast Iron Body.
- Heavy Duty.
- Anvil for all-purpose

**ITEM NO. : JMS-115**

### Horn Flat Anvil



- Made of Best Steel
- With Good Tempering
- Anvil for All-Purpose

**ITEM NO. : JMS-120**

### Buff Rake with Wooden Handle



**ITEM NO. : BRS-950**

### Buff Rake - Small with Wooden Handle



**ITEM NO. : BRS-951**

### Buff Rake - Steel



**ITEM NO. : BRS-952**

### Plastic Ear Gun



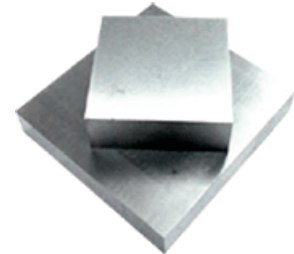
**ITEM NO. : JMS-150**

### Ring Holder



**ITEM NO. : JEQ-320**

### Steel Blocks



ITEM NO.	DESCRIPTION
JMS-232	2" x 2" x 3/4"
JMS-233	2" x 2" x 1"
JMS-234	2-1/2" x 2-1/2" x 3/4"
JMS-235	2-1/2" x 2-1/2" x 1"
JMS-236	3" x 3" x 3/4"
JMS-237	3" x 3" x 1"
JMS-238	4" x 4" x 3/4"
JMS-239	4" x 4" x 1"

### Draw Plates

ITEM NO.	DESCRIPTION
JMS-202	Round
JMS-204	Half Round
JMS-206	Oval
JMS-208	Drop
JMS-210	Square
JMS-212	Flat
JMS-214	Hexagonal
JMS-216	Triangle



### Burnisher - Straight



- with Wooden Handle

**ITEM NO. : BEN-135**

### Burnisher - Curved



- with Wooden Handle

**ITEM NO. : BEN-140**

### Bezel Pusher



**ITEM NO. : BEN-170**

### Bezel Roller



**ITEM NO. : BEN-160**

### Prong Pusher



**ITEM NO. : BEN-180**

### Prong Lifter



- Prong Lifter Tempered Carbon Steel

**ITEM NO. : BEN-200**

### Scratch Brush



**ITEM NO. : JMS-305**

### Disc Cutter

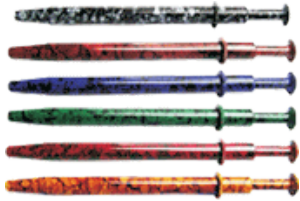


- Set of 7, Size 4(1/4"), 5(5/16"), 6(3/8"), 7(7/16"), 8(1/2"), 9(9/16"), 10(5/8")

**ITEM NO. : DAP-650**



### Diamond Grip - Coloured



- Available in Different Colours of Your Choice. Black, Brown, Blue, Green, Red, Yellow

**ITEM NO. : DMD-145**

### Diamond Grip - Coloured (Small)



- Available in Different Colours of Your Choice. Black, Brown, Blue, Green, Red, Yellow

**ITEM NO. : DMD-150**

### Tweezers for Diamonds - Colored



- Available in Different Colours of Your Choice. Black, Brown, Blue, Green, Red, Yellow

**ITEM NO. : REW-545**

### Pearl Sieves



- Pearl Sieves 6.6 cm, 43 Plates. Large Hole Diameter on Sieves Exclusively for Sorting Pearls.

**ITEM NO. : DMD-290**

### Diamond Sieves



ITEM NO.	SIZE	SET OF PLATES
DMD-230	33 mm	23 Plates
DMD-232	33 mm	42 Plates
DMD-234	47 mm	23 Plates
DMD-236	47 mm	42 Plates
DMD-238	66 mm	23 Plates
DMD-240	66 mm	42 Plates
DMD-242	80 mm	23 Plates
DMD-244	80 mm	42 Plates
DMD-246	107 mm	23 Plates
DMD-248	107 mm	42 Plates

### Lazor Diamond Sieves



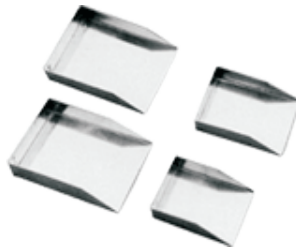
ITEM NO.	DESCRIPTION
DMD-270	4.8 Cm, 42 Plates in MM Sizes
DMD-273	6.6 Cm, 42 Plates in MM Sizes
DMD-276	8 Cm, 42 Plates in MM Sizes
DMD-279	10.7 Cm, 42 Plates in MM Sizes

### Shovels



ITEM NO.	DESCRIPTION
BRT-920	Chrome
BRT-922	Black

### Diamond Shovel



ITEM NO.	DESCRIPTION
BRT-940	1 No.
BRT-942	2 No.
BRT-946	3 No.
BRT-948	4 No.
BRT-950	5 No.

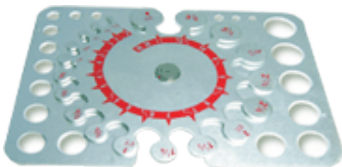
### Oval Gauge



- Oval Gauge for Stones 0.01-4 ct., Width 55 mm

**ITEM NO. : JGS-090**

### Metal Pocket Gauge



- Metal Pocket Birthstone Gauge (K & B Diamond and Stone Gauge)

**ITEM NO. : JGS-125**

### Diamond / Gem Stone Fan Gauge



- Diamond / Gem Stone Fan Gauge with 7 Arms

**ITEM NO. : JGS-105**

### Diamond Fan Gauge



- With 4 Arms

**ITEM NO. : JGS-100**

### Diamond Gauge



- Diamond Gauge, Measures Round & Baguette Stones from 1/100 to 2 Carats

**ITEM NO. : JGS-110**

### Gauge Metal for Diamonds



**ITEM NO. : JGS-120**

### Pearl Gauge



ITEM NO.	CAPACITY
JGS-145	10 MM
JGS-148	20 MM

### Pearl & Diamond Gauge



- Plastic

**ITEM NO. : JGS-135**

### Gauge for Weighing Diamonds



- Gauge for Weighing Diamond with Book

**ITEM NO. : JGS-200**

### Filling Shovel - Small



- Filling Shovel Chrome
- Size 30 x 70 mm

**ITEM NO. : BRT-970**

### Filling Shovel - Big



- Filling Shovel Chrome
- Size 65 x 100 mm

**ITEM NO. : BRT-975**

### Eye Magnifier (10X) with Stand



- Eye Magnifier for Diamond with Stand 10X

**ITEM NO. : EYE-290**

### Eye Glass - Tripod (18 mm)



**ITEM NO. : EYE-255**

### Eye Glass - Tripod (21 mm)



**ITEM NO. : EYE-257**

### Eye Glass - Tripod Black Head (10X) (High Power)



**ITEM NO. : EYE-259**

### Eye Glass - Tripod (Round Shape) 10X



**ITEM NO. : EYE-261**

### Eye Glass - Tripod (Plastic) 10X Adjustable



**ITEM NO. : EYE-265**

### Folding Magnifier - Pocket



ITEM NO.	MAGNIFICATION POWER	COVER
EYE-370	10X	Aluminum

### Eye Loupes - Oval



Available in different Finish & Colours.  
(Golden, Chrome, Black, Rubber Black,  
Black Chrome, Red, Green, Yellow, Blue  
& many more)

ITEM NO.	SIZE	COVER
EYE-610	18 MM	Without Leather Cover
EYE-620	18 MM	With Leather Cover
EYE-630	21 MM	Without Leather Cover
EYE-640	21 MM	With Leather Cover

### Eye Loupes - Hex



Available in different Finish & Colours.  
(Golden, Chrome, Black, Rubber Black,  
Black Chrome, Red, Green, Yellow, Blue  
& many more)

ITEM NO.	SIZE	COVER
EYE-670	18 MM	Without Leather Cover
EYE-680	18 MM	With Leather Cover
EYE-690	21 MM	Without Leather Cover
EYE-700	21 MM	With Leather Cover

### Eye Loupes - Round with Stylish Colors



Available in Different Stylish Colours.  
(Black, Brown, Blue, Green, Red,  
Yellow etc. etc.).

ITEM NO.	SIZE	COVER
EYE-730	18 MM	Without Leather Cover
EYE-740	18 MM	With Leather Cover
EYE-750	21 MM	Without Leather Cover
EYE-760	21 MM	With Leather Cover

### Eye Loupes - Hex with Stylish Colors



Available in Different Stylish Colours.  
(Black, Brown, Blue, Green, Red,  
Yellow etc. etc.).

ITEM NO.	SIZE	COVER
EYE-800	18 MM	Without Leather Cover
EYE-810	18 MM	With Leather Cover
EYE-820	21 MM	Without Leather Cover
EYE-830	21 MM	With Leather Cover



# **SIMRAN TOOLS INTERNATIONAL**

**664, MILITARY ROAD, ANAND PARBAT  
NEW DELHI - 110005 (INDIA)**

**E-mail : [sales@watchtools.in](mailto:sales@watchtools.in)**

**E-mail : [simrantools@vsnl.net](mailto:simrantools@vsnl.net)**

**Web Site : [www.watchtools.in](http://www.watchtools.in)**

**Web Site : [www.jewelerstools.in](http://www.jewelerstools.in)**

**Mobile : +91-9958281414**

**Mobile : +91-9313811414**